

## 美国西弗吉尼亚大学 本科生国际访问学习项目介绍



### 西弗吉尼亚大学

建于 1867，是中国国家教育部认可的、被 *US News and World Report* 评为公立大学 Top100 的州立大学，也是西弗吉尼亚州的旗舰大学。西弗吉尼亚大学被卡耐基高级教育基金会评为一级研究类大学（最高水平研究类大学，全美共有 115 所）。大学有 3 大校区，面积达 64 平方公里；有 15 所学院，可提供 191 多种本科、硕士和博士学位（详见 [majors.wvu.edu/](http://majors.wvu.edu/)）；有来自 120 个国家、全美 50 个州的学生 35,000 多人；有 20 万校友分布于世界各地 135 个国家。西弗吉尼亚大学在美国综合排名第 134 名，在全世界排名在 TOP1.5% (<http://cwur.org/2017.php>)，其商学院是 AACSB 认证的高水平商学院（全球仅 5% 商学院获得该认证）。

Campus Virtual Tours <http://www.youvisit.com/tour/wvu> (有中文版)

### 大学特色

- 坐落于全美 Top 10 美丽小城 Morgantown，是美国最安全的校园之一。2018 在全美 3000 多所大学排名中，被评为 Top 34 最安全大学；
- 位于美国东北部，临近华盛顿、匹兹堡、费城和纽约等大都市；
- 大学有 460 个学生社团，校园生活丰富多彩，师生和当地居民热情友好；



- 校园设施完备，提供一流的免费健身和户外运动设施，以及免费公交和 PRT 系统；
- 2017 年大学有 2262 名来自世界 114 个国家和地区的国际留学生；
- 为学生提供接机、住宿安排、购物、课业辅导、就业指导等系列免费服务。

## 项目介绍

- 根据访问学生培养方案，国内大学二年级、三年级或四年级学生申请到西弗吉尼亚大学参加为期一年的学习，学习结束后，西弗吉尼亚大学授予学习证明。学分转回国内后，国内院校将授予本科学士学位和毕业证书。访学期间，学生可以选修全校任何专业的课程（有前置课程要求的除外）。美国访学经历将有助于就业和申请国外研究生。



## 入学条件

- 身心健康，能遵守当地法律和校纪校规的国内在校本科学生；
- 英语要求：
  - (1) 通过 WVU 老师的 SKYPE 视频英语测试；或
  - (2) 通过 WVU 内部托福考试（每年 5 月和 11 日在上海和天津分别举行，免考试费）；或
  - (3) 通过标准托福（61 分后以上）或雅思 6.0

## 学习费用

- 根据西弗吉尼亚大学每年公布的收费标准。2019-2020 学年学杂费：US\$27,240 美元/学年；保险：1500-1800 美元/年；
- 住宿费：600-650 美元/月；生活费：400-600 美元/月
- 详见 <http://tuition.wvu.edu/>

## 申请材料

- 入学申请表、中英文成绩单、在校中英文证明、护照信息页复印件、银行存款证明、英文简历、护照照片（电子版）

**秋季入学申请截止日期为 4 月 1 日。**



西弗吉尼亚大学国际入学咨询官员 赵忠民

电话: 001 (304) 293-3047, 邮件: [zhongmin.zhao@mail.wvu.edu](mailto:zhongmin.zhao@mail.wvu.edu)

地址: PO Box 6025, 1601 University Avenue, Morgantown, WV 26506, USA

西弗吉尼亚大学中国办事处:

上海市静安区南京西路 1717 号会德丰国际广场 42 楼 23 室

联系人: 李诗佳, 电话: 021-80286188, 邮件: [shijia.li@mail.wvu.edu](mailto:shijia.li@mail.wvu.edu)

有关访问学生项目材料, 请下载 <http://pan.baidu.com/s/lbpwEdif>

有关更多 WVU 信息, 请下载 <http://pan.baidu.com/s/1pKVRpLx>

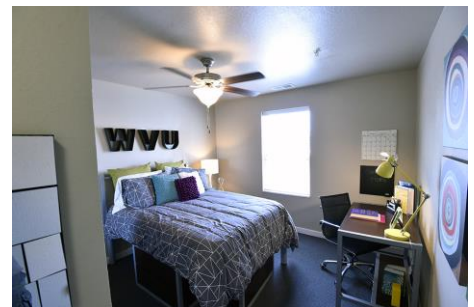


1. 在美国学习期间, 在生活上遇到困难怎么办?

答: 西弗吉尼亚大学提供完善的后勤保障服务, 学生在这里学习没有任何后顾之忧。我们提供国际机场接、送机, 以及周末购物班车服务。学校为中国学生建有辅导员制度, 定期开会, 为他们提供学习和生活咨询和帮助。

2. 学生在美国的住宿条件怎么样?

答: 我们安排学生将入住西弗吉尼亚大学学生公寓。公寓按照三星级标准装修, 一人一间, 里面设备一应俱全, 学生只需携带个人生活用品。有关公寓信息, 请详见 <https://universityapartments.wvu.edu/>



3. 在美国学习期间, 在学习上遇到困难怎么办?

答: 教授每周有固定的时间为学生答疑; 西弗吉尼亚大学商学院的学习帮助中心有专人辅导有关课程; 图书馆的学术中心可以辅导几乎所有专业的课程。另外, 西弗吉尼亚大学商学院也可以安排中国籍研究生为学生辅导。

4. 到美国后, 遇到语言障碍怎么办?

答：根据需要，学校可以为学生开设免费英语强化课程。

5. 我打算在美国学习期间实习，学校是否有专业机构提供咨询服务？

答：西弗吉尼亚大学的学生职业发展中心可以提供咨询服务。学生可以在校园找到合适的实习机会。

6. 访学完成后，我是否可以申请西弗吉尼亚大学研究生项目？

答：西弗吉尼亚大学将优先录取访学项目学生，并向符合条件提供奖学金。如需了解更多关于商学院研究生毕业生就业情况，请详见 <http://business.wvu.edu/graduate-degrees>

7. 西弗吉尼亚大学的课余生活是否丰富？

- 学生室内健身休闲中心，是全美排名前十的建筑设施，活动项目包括室内游泳池、Spa 中心、健身器材中心、攀岩、篮球场、网球场、羽毛球场等，以及免费的健身舞课（例：伦巴健身舞）。中心还有各种有趣的俱乐部和学生组织

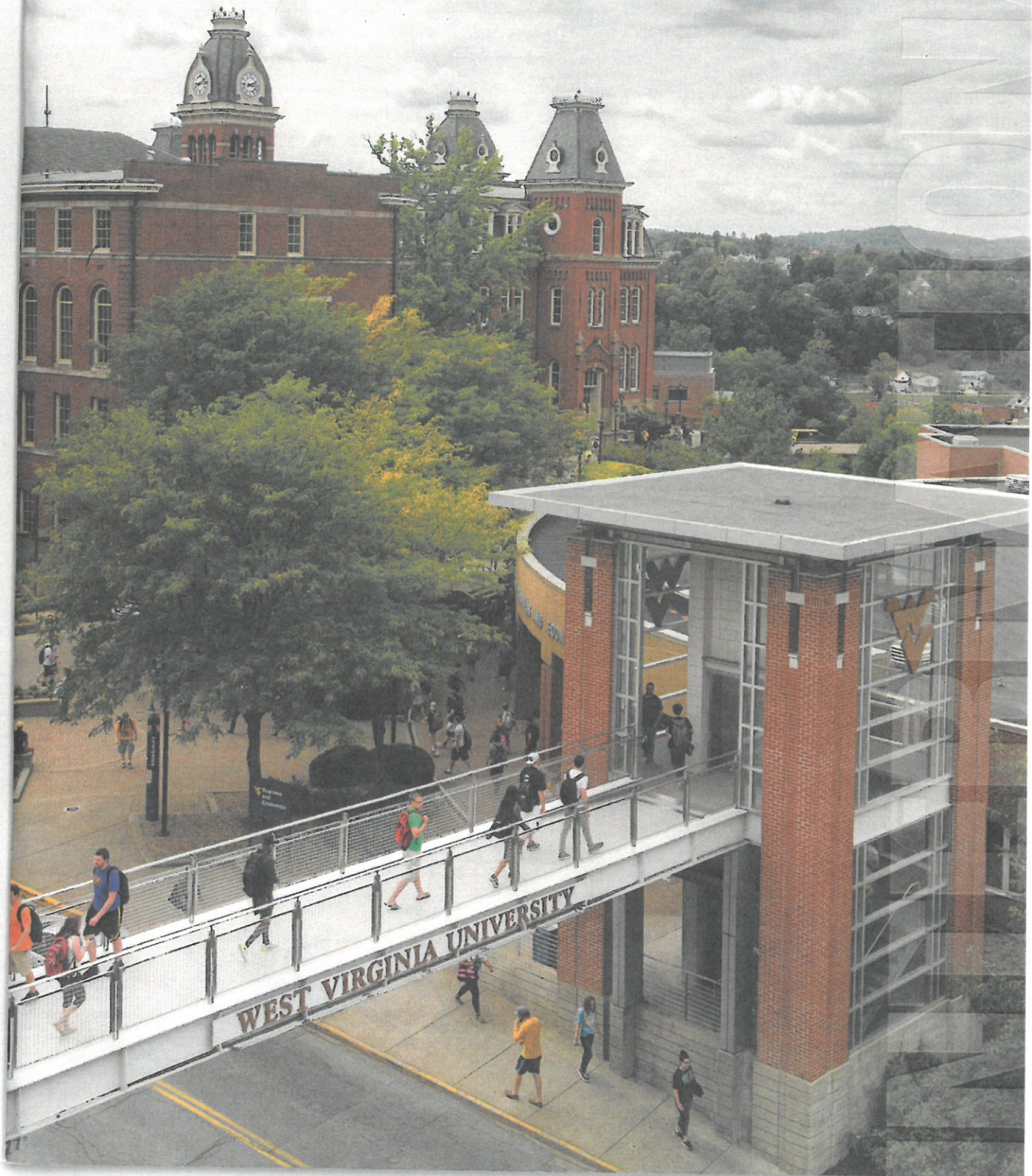
（<https://studentorgs.wvu.edu/>）。学生凭学生证免费参与。

- 室外大型体育场经常会举办各种赛事，例如足球比赛、美式橄榄球比赛、NCAA 篮球比赛。学生可以凭借自己的学生证直接在官网订免费票。
- 学生中心 Mountainlair：包括就餐区和活动区。就餐区提供各类餐点，活动区有桌球，保龄球等娱乐设施。每周五周六晚上有 UP ALL NIGHT，提供免费的美食和主题活动，平时也会举办各种有趣的活动。
- 艺术休闲中心（Art & Entertainment）会定期举办相关艺术表演。学生可以凭借学生证领取免费票和订购低价票。
- 博物馆和研究中心：工程学、艺术和植物方面的博物馆、天文馆、各种文化中心、医学中心（例如：制药博物馆）都提供免费参观。例如天文馆会提供很多相关的免费 show，这些有趣的博物馆和先进的科研中心可以给学生提供丰富的课外生活。

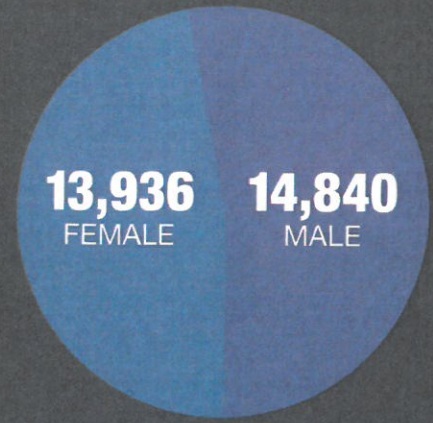


西弗吉尼亚大学中国工商中心会举办一些具有中国特色的活动，例如民族风音乐会，贺新春活动，让在异地他乡的中国留学生不会感到任何孤独和寂寞。

 West Virginia University®



The WVU System includes **31,514** students. The Morgantown campus hosts **28,776** students:



UNDERGRADUATE ▾

**22,498**

**4,782** FRESHMEN

GRADUATE ▾

**4,711**

PROFESSIONAL ▾

**1,567**

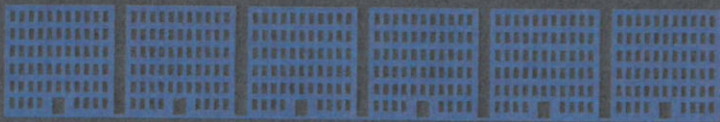


**2,169** INTERNATIONAL STUDENTS

UNDERGRADUATE STUDENT/FACULTY RATIO

**21:1**

WVU students come to Morgantown from **110 nations**, **every West Virginia county** and all **50 U.S. states** (plus D.C.).



**@WVUHousing**



**13** RESIDENCE HALLS



**4** APARTMENT COMPLEXES FOR UPPERCLASSMEN AND GRAD STUDENTS

# 353

## MAJORS

(BACHELOR'S, MASTER'S AND DOCTORATE)

▶ WWU'S MOST POPULAR MAJORS:

EXERCISE PHYSIOLOGY, ENGINEERING, BIOLOGY,  
PSYCHOLOGY, CRIMINOLOGY, BUSINESS, STRATEGIC  
COMMUNICATIONS, MULTIDISCIPLINARY STUDIES,  
NURSING, PETROLEUM AND NATURAL GAS ENGINEERING

125 MINORS, INCLUDING MUSIC INDUSTRY, EQUINE STUDIES,  
SUSTAINABLE DESIGN, CREATIVE WRITING, NANO SYSTEMS, PERSONAL  
TRAINING, EVENT PLANNING, ENVIRONMENTAL PROTECTION

WWU is accredited by the Higher Learning Commission.  
Many degree programs hold specialized accreditation.

# 467

STUDENT ORGS

# 17

INTERCOLLEGIATE VARSITY SPORTS



# 6,697

DEGREES AWARDED IN 2014-15

### YOUR GREAT FUTURE:

Over **10** career fairs held on campus, attracting nearly **600** employers. Grads have been hired by: Amazon, Boeing, IBM, Coca-Cola, NASA, Oracle, ALDI, Facebook, Hershey, Apple, Ford, Shell, KPMG, General Motors, National Geographic, International Paper.



## WE'RE WORLDWIDE

**190,000+** WWU alumni in **135** nations.

**Our 14 schools and colleges provide bachelor's, master's, doctoral and professional degrees, along with graduate certificates, in 212 degree programs.**

**DAVIS COLLEGE OF AGRICULTURE, NATURAL RESOURCES AND DESIGN**

**davis.wvu.edu | 304-293-2395**

|   |   |   |     |
|---|---|---|-----|
| Agribusiness Management                       | B |   |     |
| Agricultural and Extension Education          | B | M | D   |
| Agricultural and Resource Economics           |   |   | M   |
| Agriculture, Natural Resources and Design     |   |   | M   |
| Agroecology                                   | B |   |     |
| Agronomy                                      | B | M |     |
| Animal and Food Science                       |   |   | D   |
| Animal and Nutritional Science                | B |   |     |
| Animal Physiology                             |   |   | M   |
| Applied and Environmental Microbiology        | B | M |     |
| Biochemistry                                  | B |   |     |
| Design and Merchandising                      |   |   | M   |
| Design Studies                                | B |   |     |
| Energy Land Management                        | B |   |     |
| Entomology                                    |   |   | M   |
| Environmental and Energy Resources Management | B |   |     |
| Environmental and Natural Resource Economics  | B |   |     |
| Environmental Protection                      | B |   |     |
| Fashion, Dress and Merchandising              | B |   |     |
| Forest Resources Management                   | B |   |     |
| Forest Resources Science                      |   |   | D   |
| Forestry                                      |   |   | M   |
| Genetics and Developmental Biology            |   |   | M D |
| Horticulture                                  | B | M |     |
| Human and Community Development               |   |   | D   |
| Human Nutrition and Foods                     | B |   |     |
| Interior Design                               | B |   |     |
| Landscape Architecture                        | B | M |     |
| Multidisciplinary Studies                     | B |   |     |
| Natural Resource Economics                    |   |   | D   |
| Nutrition and Food Science                    |   |   | M   |
| Plant and Soil Sciences                       |   |   | D   |
| Plant Pathology                               |   |   | M   |
| Recreation, Parks and Tourism Resources       | B | M |     |
| Reproductive Physiology                       |   |   | M D |
| Resource Management                           |   |   | D   |
| Soil Sciences                                 | B |   |     |
| Wildlife and Fisheries Resources              | B | M |     |
| Wood Science and Technology                   | B |   |     |

**EBERLY COLLEGE OF ARTS AND SCIENCES**

**eberly.wvu.edu | 304-293-4611**

|                          |   |   |   |
|--------------------------|---|---|---|
| Anthropology             | B |   |   |
| Applied Statistics       |   |   | G |
| Biochemistry             | B |   |   |
| Biology                  | B | M | D |
| Chemistry                | B | M | D |
| Communication Studies    | B | M | D |
| Computational Statistics |   |   | D |
| Creative Writing         |   |   | M |
| Criminology              | B |   |   |



|  |   |   |   |   |
|--|---|---|---|---|
| Cultural Resource Management                 |   |   |   | G |
| Economics                                    | B |   |   |   |
| English                                      | B | M | D |   |
| English/Secondary Education                  | B |   |   |   |
| Environmental Geoscience                     | B |   |   |   |
| Forensic and Investigative Science           | B | M |   |   |
| Forensic Science                             |   |   | D |   |
| Geography                                    | B | M | D |   |
| Geology                                      | B | M | D |   |
| Gerontology                                  |   |   |   | G |
| Healthcare Administration                    |   |   |   | G |
| History                                      | B | M | D |   |
| Individualized Studies                       | B |   |   |   |
| Industrial Mathematics and Statistics        | B |   |   |   |
| Interdisciplinary Studies                    | B |   |   |   |
| International Studies                        | B |   |   |   |
| Latin American Studies                       | B |   |   |   |
| Legal Studies                                |   | M |   |   |
| Mathematics                                  | B | M | D |   |
| Mathematics/Secondary Education              | B |   |   |   |
| Multidisciplinary Studies                    | B |   |   |   |
| Nonprofit Management                         |   |   |   | G |
| Philosophy                                   | B |   |   |   |
| Physics                                      | B | M | D |   |
| Political Science                            | B | M | D |   |
| Professional Writing and Editing             |   | M |   |   |
| Psychology                                   | B | M | D |   |
| Public Administration                        |   | M |   |   |
| Religious Studies                            | B |   |   |   |
| Slavic and Eastern European Studies          | B |   |   |   |
| Social Work                                  | B | M |   |   |
| Sociology                                    | B | M | D |   |
| Statistics                                   |   | M |   |   |
| Women's and Gender Studies                   | B |   |   | G |
| World Languages, Literatures and Linguistics | B | M |   |   |
| World Languages/Secondary Education          | B |   |   |   |

**B: Bachelor's**  
**M: Master's**  
**D: Doctoral or**  
**Professional**  
**G: Graduate Certificate**

### COLLEGE OF BUSINESS AND ECONOMICS

be.wvu.edu | 304-293-4092

|   |   |   |   |   |
|---|---|---|---|---|
| Accounting                                | B |   | D |   |
| Business Administration (also online)     |   | M |   |   |
| Business Data Analytics                   |   | M |   |   |
| Economics                                 | B | M | D |   |
| Entrepreneurship and Innovation           | B |   |   |   |
| Finance                                   | B | M | D |   |
| Forensic Accounting and Fraud Examination |   |   |   | G |
| Forensic and Fraud Examination            |   | M |   |   |
| General Business                          | B |   |   |   |
| Global Supply Chain Management            | B |   |   |   |
| Hospitality and Tourism Management        | B |   |   |   |
| Industrial Relations                      |   | M |   |   |
| Management                                | B |   | D |   |
| Management Information Systems            | B |   |   |   |
| Marketing                                 | B |   | D |   |
| Professional Accountancy                  |   | M |   |   |

### COLLEGE OF CREATIVE ARTS

ccarts.wvu.edu | 304-293-4841

|               |   |   |  |  |
|---------------|---|---|--|--|
| Acting        | B | M |  |  |
| Art Education | B | M |  |  |
| Art History   | B | M |  |  |
| Ceramics      | B | M |  |  |

## COLLEGE OF CREATIVE ARTS (CONTINUED)

|  |   |   |   |
|--|---|---|---|
| Collaborative Piano                      | M | D |   |
| Composition                              | M | D |   |
| Conducting                               | M | D |   |
| Costume Design and Technology            | M |   |   |
| Dance                                    | B |   |   |
| Graphic Design                           | B | M |   |
| Integrative and Contemporary Performance | B |   |   |
| Intermedia and Photography               | B | M |   |
| Jazz Pedagogy                            | M |   |   |
| Lighting Design and Technology           | M |   |   |
| Multidisciplinary Studies                | B |   |   |
| Music                                    | B |   |   |
| Music Composition                        | B |   |   |
| Music Education                          | B | M | D |
| Music Industry                           | B | M | G |
| Music Performance: Instrumental          | B |   |   |
| Music Performance: Jazz Studies          | B |   |   |
| Music Performance: Piano                 | B |   |   |
| Music Performance: Voice                 | B |   |   |
| Music Performance: Woodwinds             | B |   |   |
| Music Theory                             | B | M |   |
| Music Therapy                            | B |   |   |
| Musical Theatre                          | B |   |   |
| Musicology                               |   | M |   |
| Painting                                 | B | M |   |
| Performance                              |   | M | D |
| Piano Pedagogy                           |   | M |   |
| Printmaking                              | B | M |   |
| Puppetry                                 | B |   |   |
| Scenic Design and Technology             |   | M |   |
| Sculpture                                | B | M |   |
| Studio Art                               |   | M |   |
| Technical Direction                      |   | M |   |
| Theatre                                  | B |   |   |
| Theatre Design and Technology            | B |   |   |
| Visual Arts Therapy                      |   |   | G |
| Vocal Pedagogy and Performance           |   |   | D |

## SCHOOL OF DENTISTRY

[dentistry.hsc.wvu.edu](http://dentistry.hsc.wvu.edu) | 304-293-2521

|                |   |   |   |
|----------------|---|---|---|
| Dental Hygiene | B |   |   |
| Dentistry      |   |   | D |
| Endodontics    |   | M |   |
| Orthodontics   |   | M |   |
| Periodontics   |   | M |   |
| Prosthodontics |   | M |   |

## COLLEGE OF EDUCATION AND HUMAN SERVICES

[cehs.wvu.edu](http://cehs.wvu.edu) | 304-293-5703

|  |   |   |   |
|--|---|---|---|
| Audiology  |   |   | D |
| Autism Spectrum Disorders                            |   | M |   |
| Child Development and Family Studies                 | B |   |   |
| Clinical Rehabilitation and Mental Health Counseling |   | M |   |
| Communication Sciences and Disorders                 |   |   | D |
| Counseling   |   | M |   |
| Counseling Psychology                                |   |   | D |
| Curriculum and Instruction                           |   |   | D |
| Early Childhood Education                            |   | M |   |
| Early Intervention/Early Childhood Special Education |   | M |   |
| Education  |   |   | D |
| Educational Leadership/Public School Administration  |   | M | D |

|  |   |   |   |
|--|---|---|---|
| Educational Psychology                                       |   | M | D |
| Elementary Education   | B | M |   |
| Elementary Education/Advanced                                |   | M |   |
| Elementary Education/MDS                                     |   | M |   |
| Gifted Education   |   | M |   |
| Health Professions Education                                 |   |   | G |
| Higher Education Administration                              |   | M | D |
| Higher Education Curriculum and Teaching                     |   | M |   |
| Instructional Design and Technology                          |   | M | D |
| Interdisciplinary Certificate in Disability Studies          |   |   | G |
| Literacy Education   |   | M |   |
| Low Vision/Blindness   |   | M |   |
| MDS-Education/Human Services                                 | B |   |   |
| Multicategorical Special Education                           |   | M |   |
| Public School Administration (Instructional Supervisor Prep) |   |   | G |
| Public School Administration (Principal Preparation)         |   |   | G |
| Public School Administration (Superintendent Preparation)    |   |   | G |
| Regents Bachelor of Arts                                     | B |   |   |
| Secondary Education  | B | M |   |
| Secondary Education/Advanced                                 |   | M |   |
| Secondary Education/English                                  |   | M |   |
| Secondary Education/Mathematics                              |   | M |   |
| Secondary Education/Multidisciplinary Studies                |   | M |   |
| Secondary Education/Social Studies                           |   | M |   |
| Secondary Education/World Languages                          |   | M |   |
| Severe/Multiple Disabilities                                 |   | M |   |
| Special Education  |   | M | D |
| Speech Pathology   |   | M |   |
| Speech Pathology and Audiology                               | B |   |   |

**B: Bachelor's**  
**M: Master's**  
**D: Doctoral or**  
**Professional**  
**G: Graduate Certificate**

**BENJAMIN M. STATLER COLLEGE OF ENGINEERING  
AND MINERAL RESOURCES**

**statler.wvu.edu | 304-293-4821**

|   |   |   |   |
|---|---|---|---|
| Aerospace Engineering                       | B | M | D |
| Biomedical Engineering                      | B |   |   |
| Biometric Systems                           | B |   |   |
| Chemical Engineering                        | B | M | D |
| Civil Engineering                           | B | M | D |
| Computer Engineering                        | B |   | D |
| Computer Forensics                          |   |   | G |
| Computer Science                            | B | M | D |
| Electrical Engineering                      | B | M | D |
| Energy Systems Engineering                  |   | M |   |
| Engineering                                 |   | M |   |
| Industrial Engineering                      | B | M | D |
| Industrial Hygiene                          |   | M |   |
| Information Assurance and Biometrics        |   |   | G |
| Interactive Technologies and Serious Gaming |   |   | G |
| Material Science and Engineering            |   | M |   |
| Mechanical Engineering                      | B | M | D |
| Mining Engineering                          | B | M | D |
| Occupational Safety and Health              |   |   | D |
| Petroleum and Natural Gas Engineering       | B | M | D |
| Safety Management                           |   | M |   |
| Software Engineering                        |   | M | G |

**COLLEGE OF LAW**

**law.wvu.edu | 304-293-5301**

|  |  |   |   |
|--|--|---|---|
| Energy Law and Sustainable Development |  | M |   |
| Forensic Justice                       |  | M |   |
| Law                                    |  |   | D |

### REED COLLEGE OF MEDIA

reedcollegeofmedia.wvu.edu | 304-293-3505

|                                     |   |   |   |
|-------------------------------------|---|---|---|
| Advertising                         | B |   |   |
| Data Marketing Communications       |   | M |   |
| Digital Marketing Communications    |   |   | G |
| Integrated Marketing Communications |   | M | G |
| Journalism                          | B | M |   |
| Multidisciplinary Studies           | B |   |   |
| Public Relations                    | B |   |   |
| Strategic Communications            | B |   |   |

### SCHOOL OF MEDICINE

medicine.hsc.wvu.edu | 304-293-6607

|                                       |   |   |   |
|---------------------------------------|---|---|---|
| Biochemistry and Molecular Biology    |   |   | D |
| Biomedical Sciences                   |   | M | D |
| Cancer Cell Biology                   |   |   | D |
| Cellular and Integrative Physiology   |   |   | D |
| Clinical and Translational Science    |   | M | D |
| Emergency Medicine                    |   |   | G |
| Exercise Physiology                   | B | M | D |
| Health Sciences                       |   | M |   |
| Immunology and Medical Microbiology   | B |   |   |
| Immunology and Microbial Pathogenesis |   |   | D |
| Medical Laboratory Science            | B |   |   |
| Medicine                              |   |   | D |
| Neuroscience                          |   |   | D |
| Occupational Therapy                  |   | M |   |
| Pathologists' Assistant               |   | M |   |
| Physical Therapy                      |   |   | D |
| Women's Health                        |   |   | G |

### SCHOOL OF NURSING

nursing.hsc.wvu.edu | 304-293-4831

|                                   |   |   |   |
|-----------------------------------|---|---|---|
| Nursing                           | B | M | D |
| Nursing Practice                  |   |   | D |
| Post-MSN Certificate (FNP)        |   |   | G |
| Post-MSN Certificate (Leadership) |   |   | G |
| Post-MSN Certificate (PNP)        |   |   | G |

### SCHOOL OF PHARMACY

pharmacy.hsc.wvu.edu | 304-293-5101

|   |  |  |   |
|---|--|--|---|
| Health Services and Outcomes Research       |  |  | D |
| Pharmaceutical and Pharmacological Sciences |  |  | D |
| Pharmacy                                    |  |  | D |

### COLLEGE OF PHYSICAL ACTIVITY AND SPORT SCIENCES

cpass.wvu.edu | 304-293-3295

|                                      |   |   |   |
|--------------------------------------|---|---|---|
| Athletic Coaching Education          | B |   |   |
| Athletic Training                    | B | M |   |
| Coaching and Sport Education         |   | M |   |
| Coaching and Teaching Studies        |   |   | D |
| Physical Education Teacher Education | B | M |   |
| Sport and Exercise Psychology        | B |   | D |
| Sport Coaching                       |   | M |   |
| Sport Management                     | B | M |   |

**SCHOOL OF PUBLIC HEALTH**

publichealth.hsc.wvu.edu | 304-293-2502

|   |   |   |   |
|---|---|---|---|
| Applied Biostatistics                   |   |   | G |
| Biostatistics                           | M |   |   |
| Epidemiology                            | M | D |   |
| Health Policy                           | M |   |   |
| Occupational and Environmental Sciences | M | D |   |
| Public Health                           | B | M |   |
| School Health Education                 | M |   |   |
| Social and Behavioral Sciences          | M | D |   |

**B: Bachelor's**  
**M: Master's**  
**D: Doctoral or**  
**Professional**  
**G: Graduate Certificate**